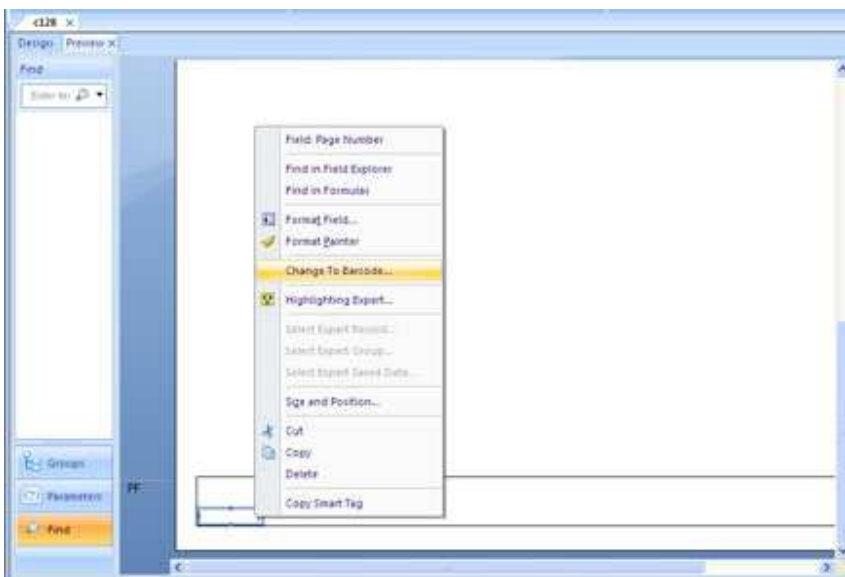


Creating a Code 128 Barcode in Crystal Reports2008®

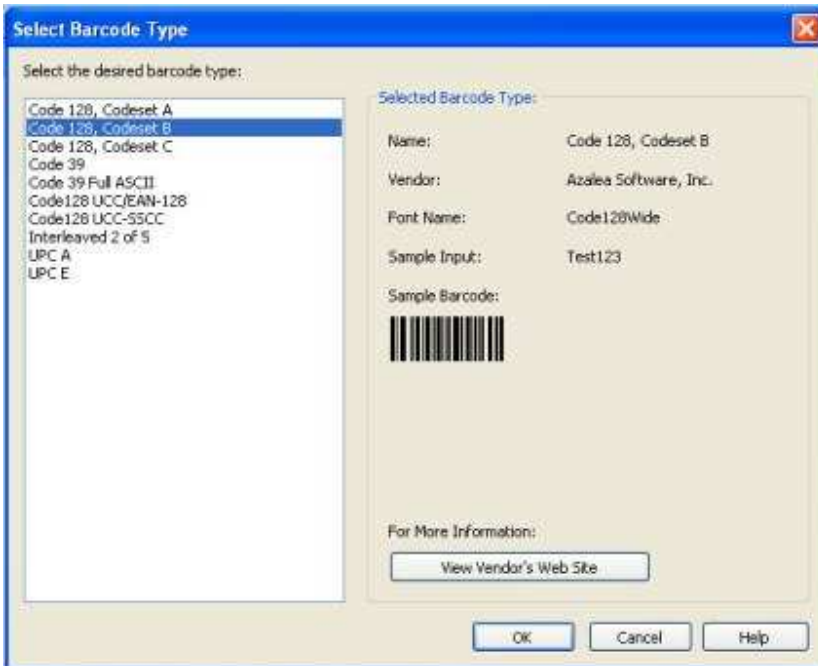
A note to current Azalea Software users with Crystal Reports 11 who have upgraded to Crystal Reports 2008™:

You don't need to install a User Function Library. Crystal Reports 2008® has the Azalea UFL built in! And now there's a built-in function for GS1-128 barcodes. You don't need to use Chr (238) to create a GS1-128 barcode in CR 2008®, and if your existing data sets have it you'll need to remove it. Please contact us if you need assistance.

1. Import your report data, switch to the *Design* tab and right-click on the field where you want your Code 128 barcode to appear. Choose *Change to Barcode*.

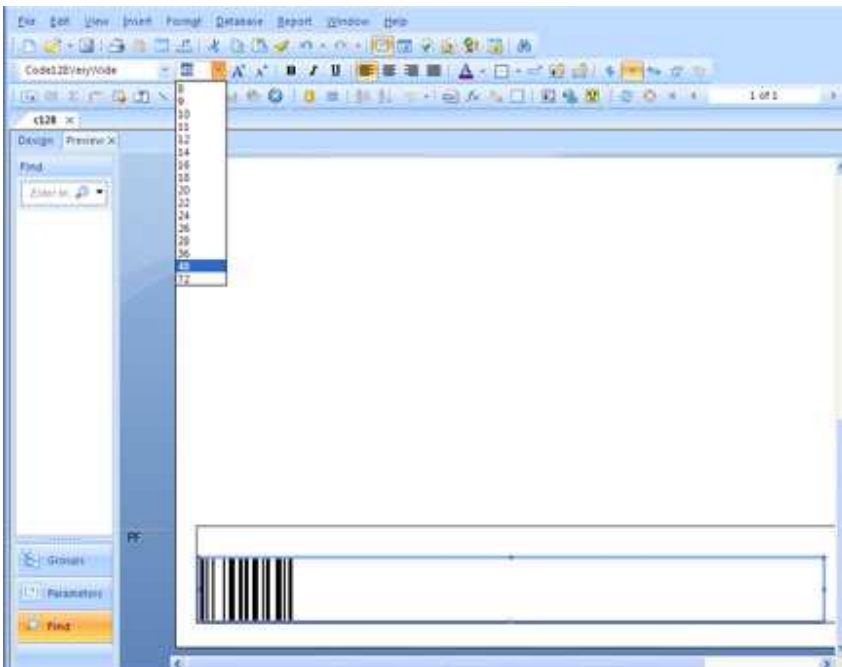


2. The *Select Barcode Type* window opens. The Azalea functions will appear on the left-hand side. Highlight the type of Code 128 barcode that you need and then click *OK*.



(If you ever need more information about Azalea products, just choose *Visit Vendor's Web Site*, which will bring you to our site).

3. Use the font menu in the upper toolbar to select a font and set the point size. (The default Code 128 font in Crystal Reports 2008® is set to Code128). This example is Code128VeryWide at 48 points.



4. You're ready to save, then print or distribute your report. *Voila!*

Azalea Software, Inc
PO Box 16660
Seattle, WA 98116

Technical Support: 1.206.336.9559
technicalsupport@azalea.com

Sales Support: 1.206.336.9575
salesinfo@azalea.com

Main: 1.206.341.9500
FAX: 1.206.299.5600
www.azalea.com