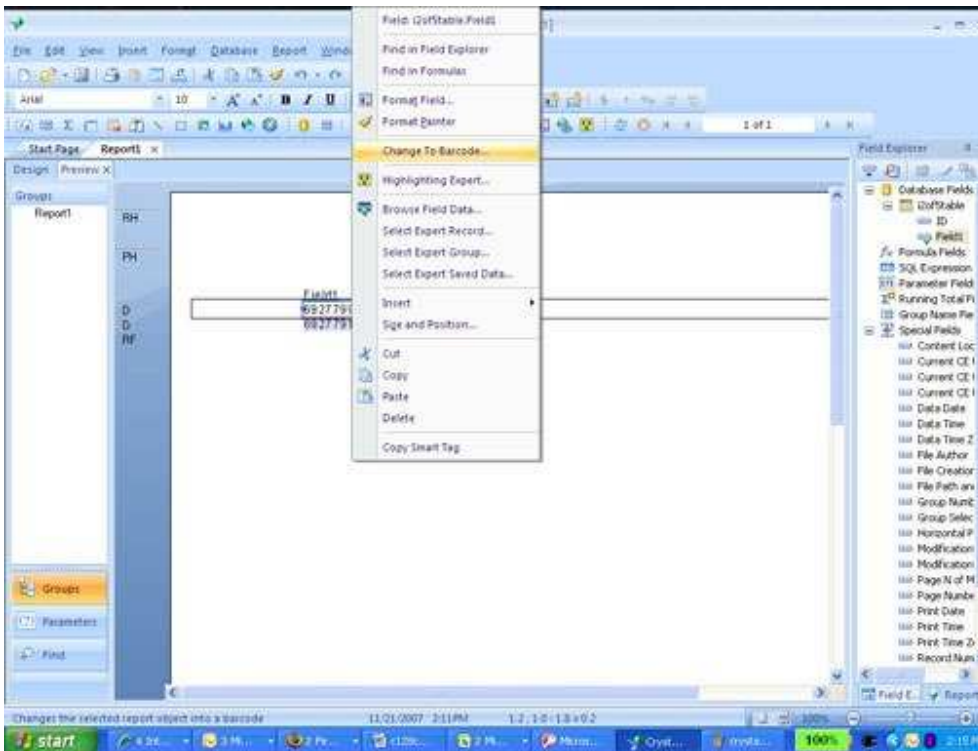


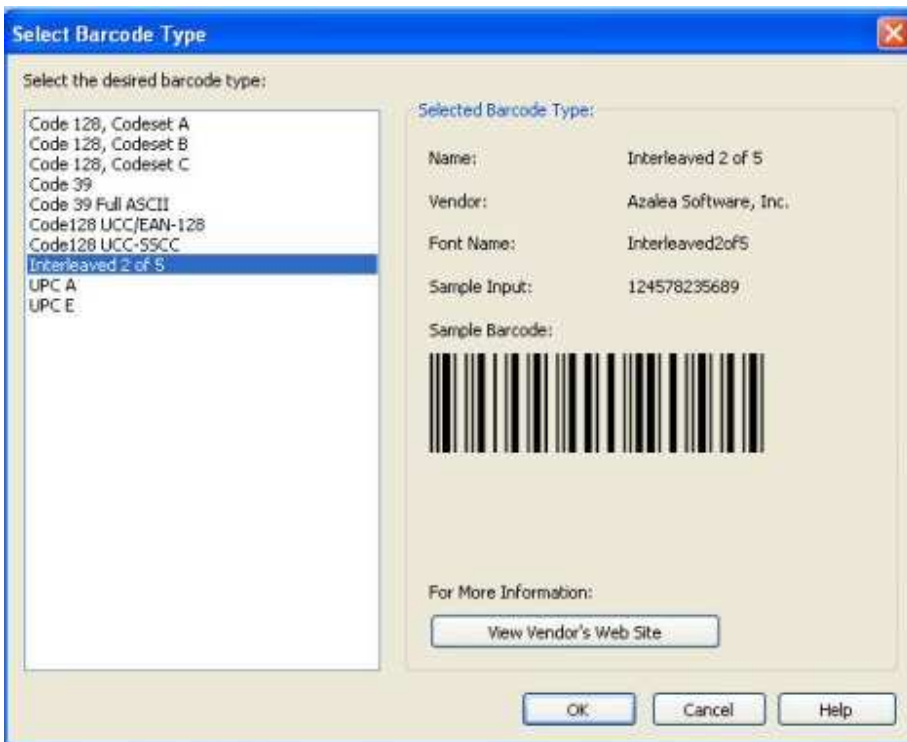
## Creating an Interleaved 2 of 5 Barcode in Crystal Reports2008®

A note to current Azalea Software users who have upgraded from Crystal Reports 11 to Crystal Reports 2008™: You don't need to install a User Function Library. Crystal Reports 2008® has the Azalea UFL built right in.

1. Import your report data, switch to the *Design* tab and right-click on the field where you want your I2of5 barcode to appear. Choose *Change to Barcode*.

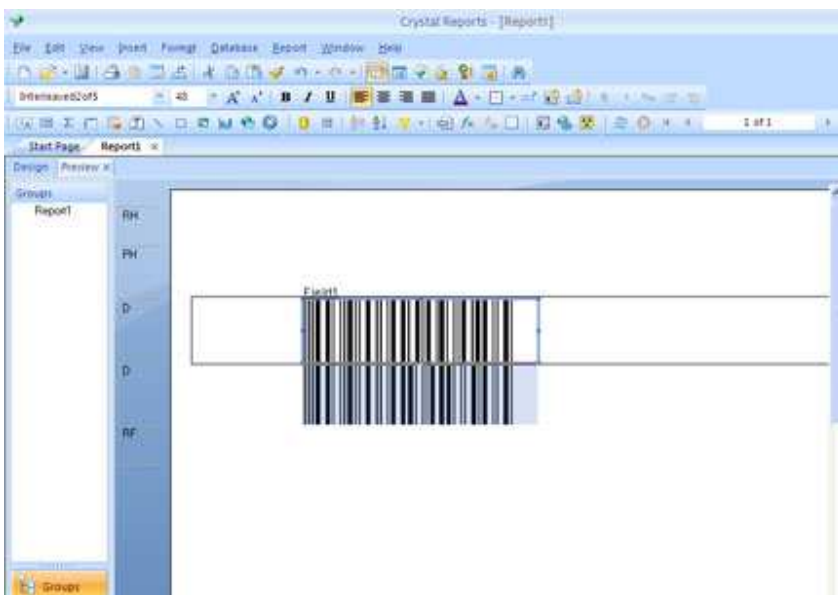


2. The *Select Barcode Type* window opens. The Azalea functions will appear on the left-hand side. Highlight *Interleaved 2 of 5* and then click *OK*.



(If you ever need more information about Azalea products, just choose *Visit Vendor's Web Site*, which will bring you to our site).

3. Use the font menu in the upper toolbar to select a font and set the point size. This example is *Interleaved2of5* at 48 points.



4. You're ready to save, then print or distribute your report. *Voila!*

Azalea Software, Inc  
PO Box 16660  
Seattle, WA 98116

Technical Support: 1.206.336.9559  
[technicalsupport@azalea.com](mailto:technicalsupport@azalea.com)

Sales Support: 1.206.336.9575  
[salesinfo@azalea.com](mailto:salesinfo@azalea.com)

Main: 1.206.341.9500  
FAX: 1.206.299.5600  
[www.azalea.com](http://www.azalea.com)