

Azalea PDF417

Azalea PDF417 is a versatile toolkit that allows you to create PDF417 bar codes for use in your favorite Microsoft Windows applications. Azalea PDF417 has two components. One tool uses fonts to create the PDF417 symbols. The other tool generates bitmap files (.BMP). If you're creating large numbers of PDF417 symbols from within a database or custom application, you'll want to use the fonts. They are fast, can be integrated into larger applications, and don't require the storage of separate graphic files. If you are creating just one or two bar codes, or specifically need graphic output, you may prefer the bitmap tool.

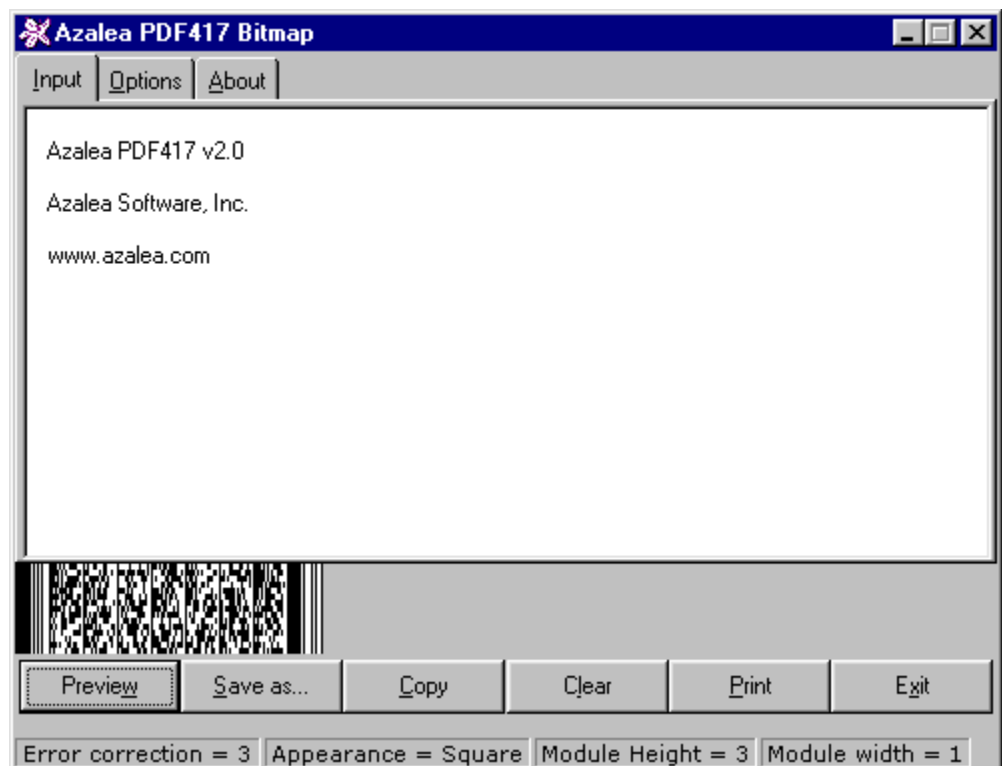
The other choice you have is whether to use our bundled utilities or to call the Azalea PDF417 ActiveX DLL from within your own application. Both the font utility and the bitmap utility are designed to make one or more bar codes at a time. If you plan on printing a large number of symbols in a batch mode or on a regular basis, you'll want to use the ActiveX DLL.

Using The Bitmap Utility

Using the Azalea PDF417 bitmap utility is easy. Simply type data into the input window or paste data from the Clipboard.

Click the Preview button to see how your symbol will look.

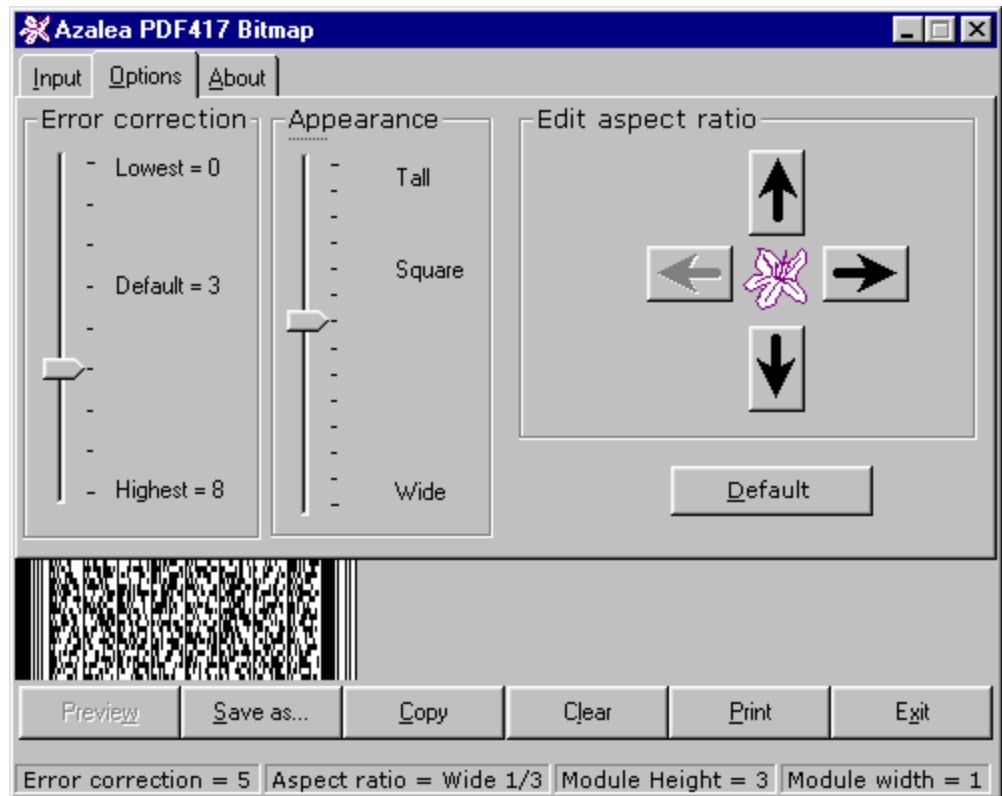
The status bar at the bottom of the window displays the properties of your bar code.



To modify the various properties, click on the Options tab and then change one or more of the characteristics.

You can set the error correction level, the overall aspect ratio (appearance), and the aspect ratio of the code words themselves.

The preview updates as you change the options. The value for each of the options you select is displayed in the status bar.



Saving Your Bitmap Output

After you have input your data and set your options, you have two choices. You can either copy the bitmap you generated to the Clipboard or save it as a file.

After copying your image to the Clipboard, you can switch to another application and paste in the bitmap image. If you save the bitmap to a file, you can import that .BMP file into another application, send it to someone else via email, or store it for later use.

Using The PDF417 Fonts

Azalea PDF417 come in two formats: TrueType and Type 1 PostScript. The TrueType fonts can be used in any Windows configuration. The Type 1 fonts require the use of Adobe Type Manager (ATM). Once installed the fonts will appear in the Type menu of all your Windows applications.

Font smoothing must be turned off for the fonts to be displayed properly when using Windows98 or WindowsNT. The fonts will print fine with font smoothing turned on but will display with white spaces in them onscreen at small point sizes. *These spaces are a result of font smoothing and do not impact the printed output.*

There are three different PDF417 fonts:

- AzaleaMBA** 1:1 wide:narrow ratio
- AzaleaMBAThin** .75:1 wide:narrow ratio
- AzaleaMBAWide** 1:1.5 wide:narrow ratio

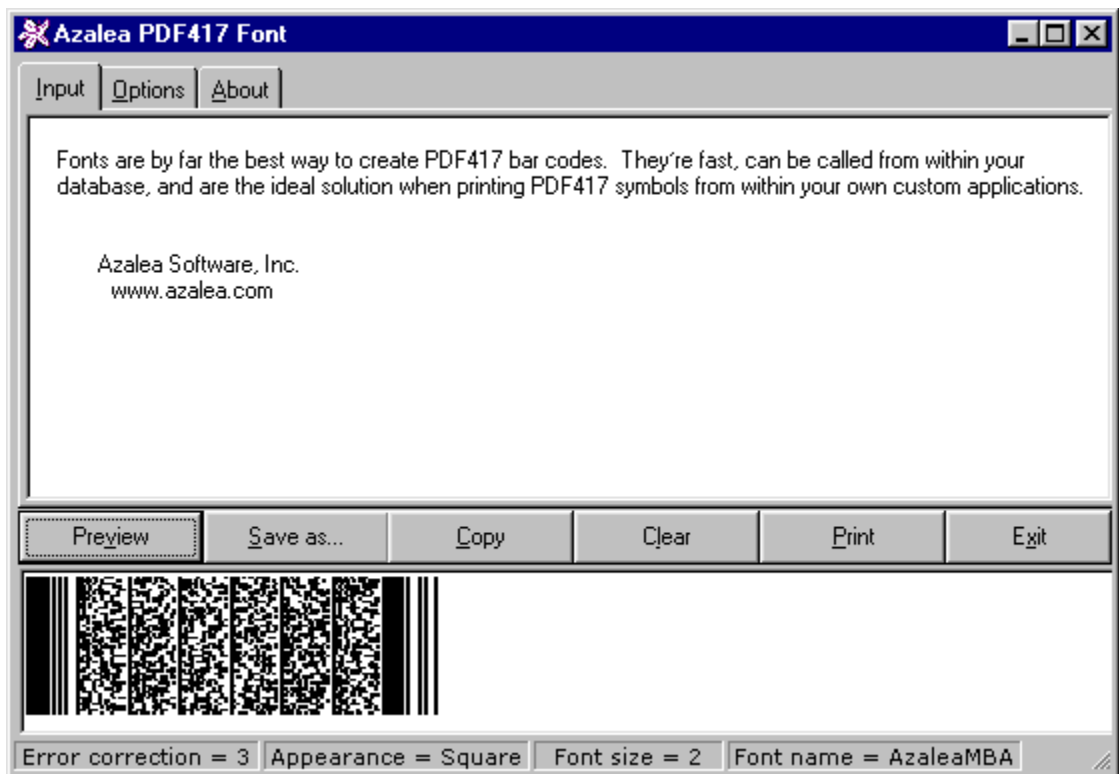
Format the text at 1-4 points. The three fonts differ in their height:width aspect ratio. A given PDF417 symbol created with the three different fonts will all be the same height but their overall width will differ. Experiment and use the best font for your specific needs.



Using The Font Utility

Use the Azalea PDF417 font utility to make one or more PDF417 symbols using the AzaleaMBA fonts. Simply type data into the input window or paste data from the Clipboard.

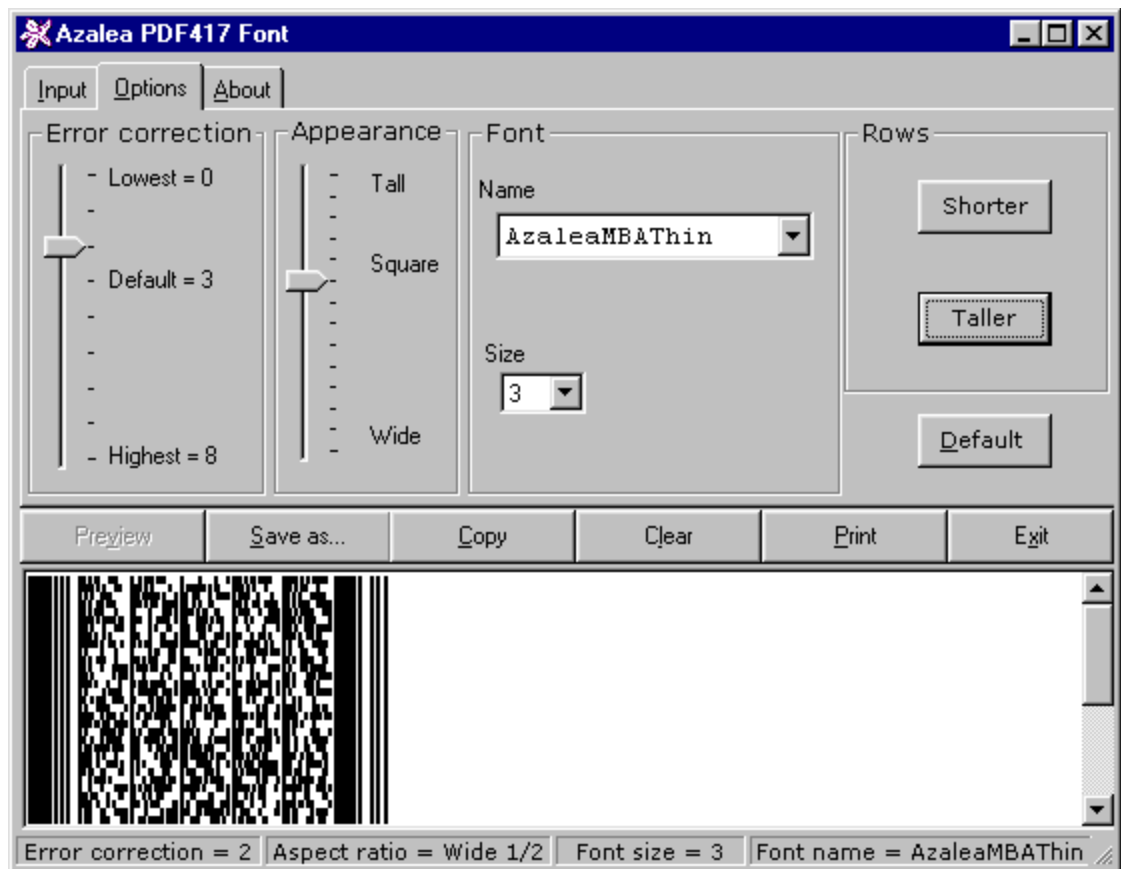
Click the Preview button to see how your symbol will look.



The status bar at the bottom of the window displays the properties of your bar code.

To modify the various properties, click on the Options tab. Then change one or more of the bar code's characteristics.

You can set the error correction level, the overall aspect ratio (appearance), select the specific font to be used, the point size, and the number of rows in the symbol.



Saving Your Font Output

After you have input your data and set your options, you have two choices. You can either copy the formatted text you generated to the Clipboard or save it as a file.

After copying your text to the Clipboard, you can switch to another application and paste it in. If you save a file, you can import it into another application, send it to someone else via email, or store it for later use.

Using The Azalea PDF417 ActiveX DLLs

Azalea PDF417 includes two ActiveX DLLs that can be called from within your own applications.

AzaleaPDF417Bitmap creates bitmap files (.BMP)

AzaleaPDF417Font creates strings, that when formatted in one of the AzaleaMBA fonts, creates PDF417 bar codes.

The general format for calling either DLL is to pass them your input and the desired aspect ratio and security level.

AzaleaPDF417Bitmap generates a bitmap file (.BMP).

```
AzaleaPDF417Bitmap(YourInput As String, AspectRatio As Byte,  
SecurityLevel As Byte, FullPathFilename As String)
```

AzaleaPDF417Font returns a string, that when formatted in one of the AzaleaMBA fonts, generates a PDF417 bar code.

```
AzaleaPDF417Font(YourInput As String, AspectRatio As Byte,  
SecurityLevel As Byte) As String
```

The aspect ratio options are:

0	Tall	2:1
1		1.75:1
2		1.5:1
3		1.25:1
4	Square	1:1
5		1:2
6		1:3
7		1:4
8		1:5
9		1:6
10		1:7
11		1:8
12		1:9
13	Wide	1:10

The security level can range from 0-8, with 8 being the maximum security level. The higher the security level, the larger the symbol.

Our web site at www.azalea.com has additional resources including sample code. To learn more about bar codes and OCR in general, please read our Bar Codes FAQ, available on our web site.

Azalea PDF417 is licensed per computer. Quantity discounts, site licenses, and redistribution agreements for developers who want to bundle it with their applications are also available.

Azalea Software is the premier bar code and OCR software company. We sell fonts and other related software that create a number of different bar codes including Code 39, Code 128, UPC, EAN, Interleaved 2 of 5, Codabar, and other symbologies. We also sell a variety of bar code scanners. For more information, please visit our web site or contact us.

Azalea PDF417 is copyright 1999 Azalea Software, Inc. All rights reserved.

Azalea PDF417 and the Azalea Software, Inc. logo are trademarks of Azalea Software, Inc. All other trademarks and registered trademarks are the property of their respective owners.



Azalea Software, Inc.

219 1st Ave S., Ste 410

Seattle WA 98104-3415

1 206 341.9500

www.azalea.com