



Creating a POSTNET Barcode in Crystal Reports2008®

A note to current Azalea Software users who have upgraded from Crystal Reports 11 to Crystal Reports 2008™: You don't need to install a User Function Library. Crystal Reports 2008® has the Azalea UFL built right in.

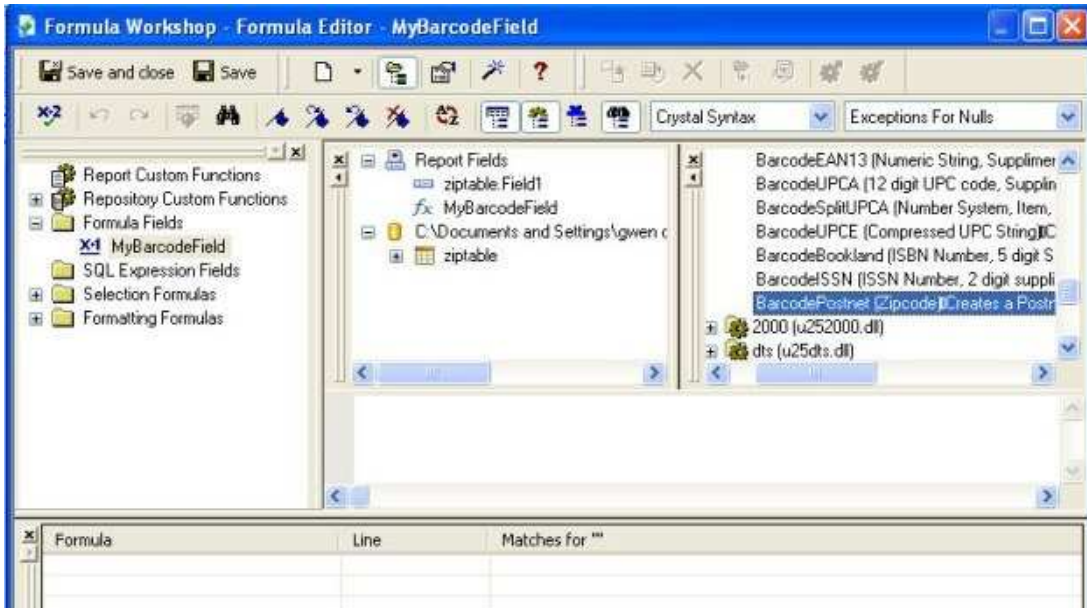
1. In the Crystal Reports menu, create a *New Formula*.



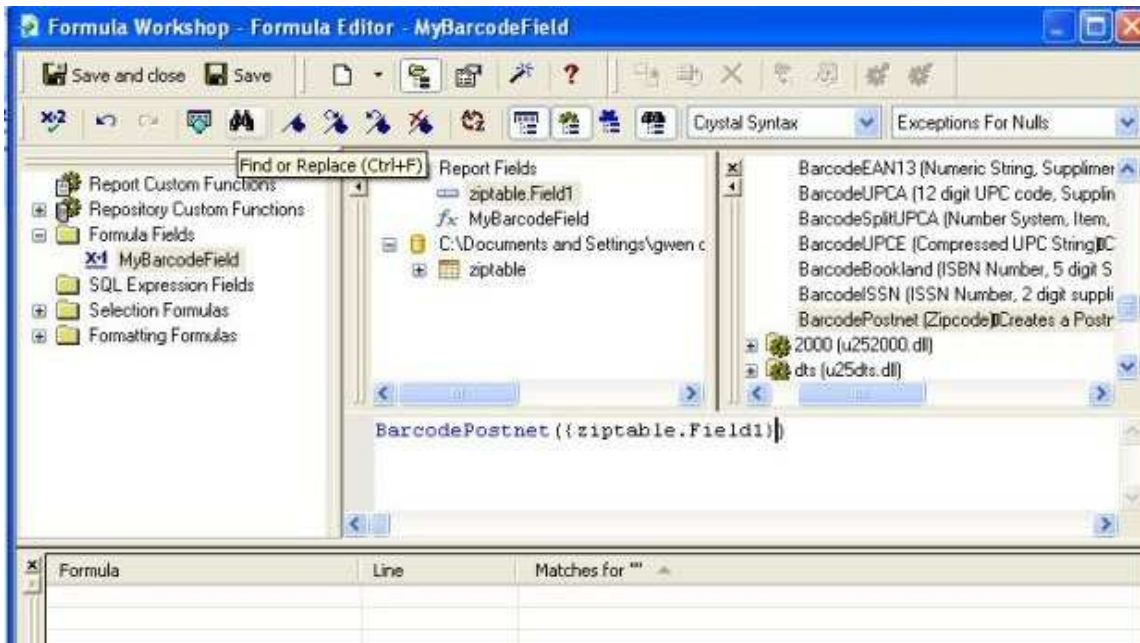
2. Name your formula.



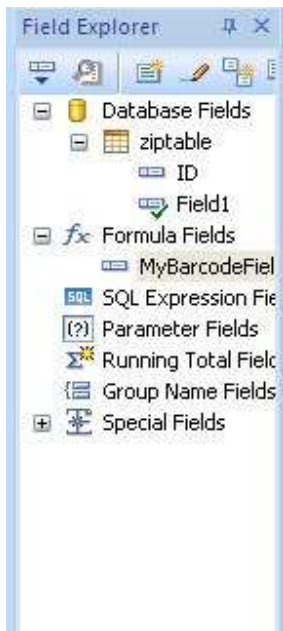
3. Double-click on *BarcodePostnet(Zipcode)*.



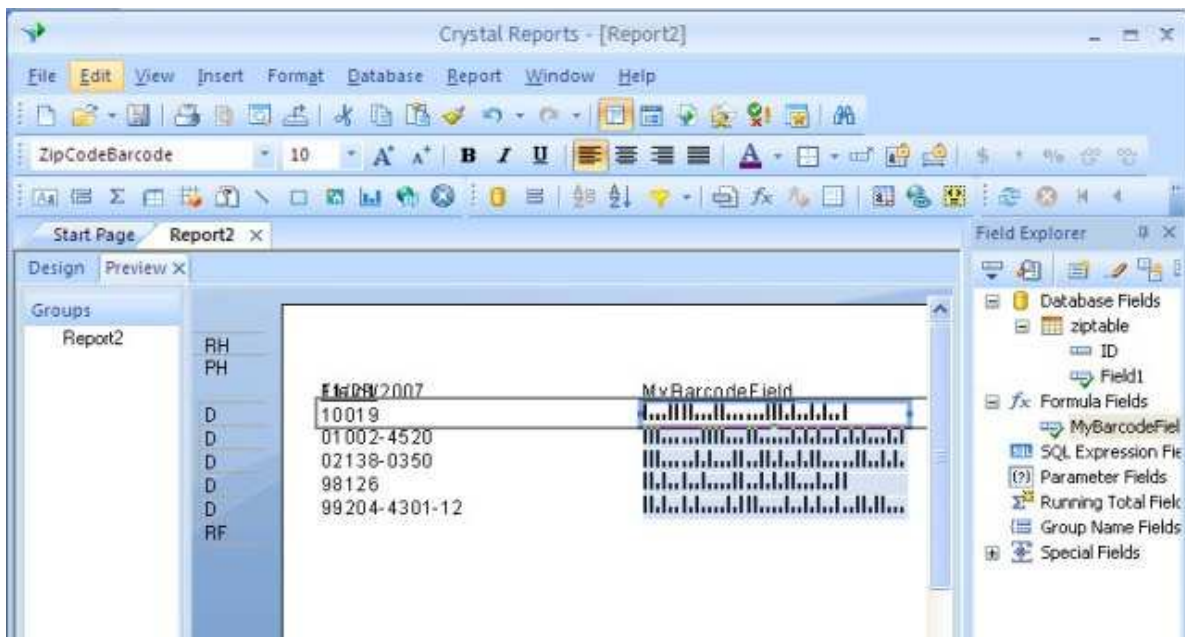
4. Double-click on field name.



5. Save and exit the formula editor.



6. Use the font menu in the upper toolbar to select a font and set the point size. This example is ZipCodeBarcode at 10 points.



7. You're ready to save, then print or distribute your report. *Voila!*

Azalea Software, Inc
PO Box 16660
Seattle, WA 98116

Technical Support: 1.206.336.9559
technicalsupport@azalea.com

Sales Support: 1.206.336.9575
salesinfo@azalea.com

Main: 1.206.341.9500
FAX: 1.206.299.5600
www.azalea.com